

ÖZKA

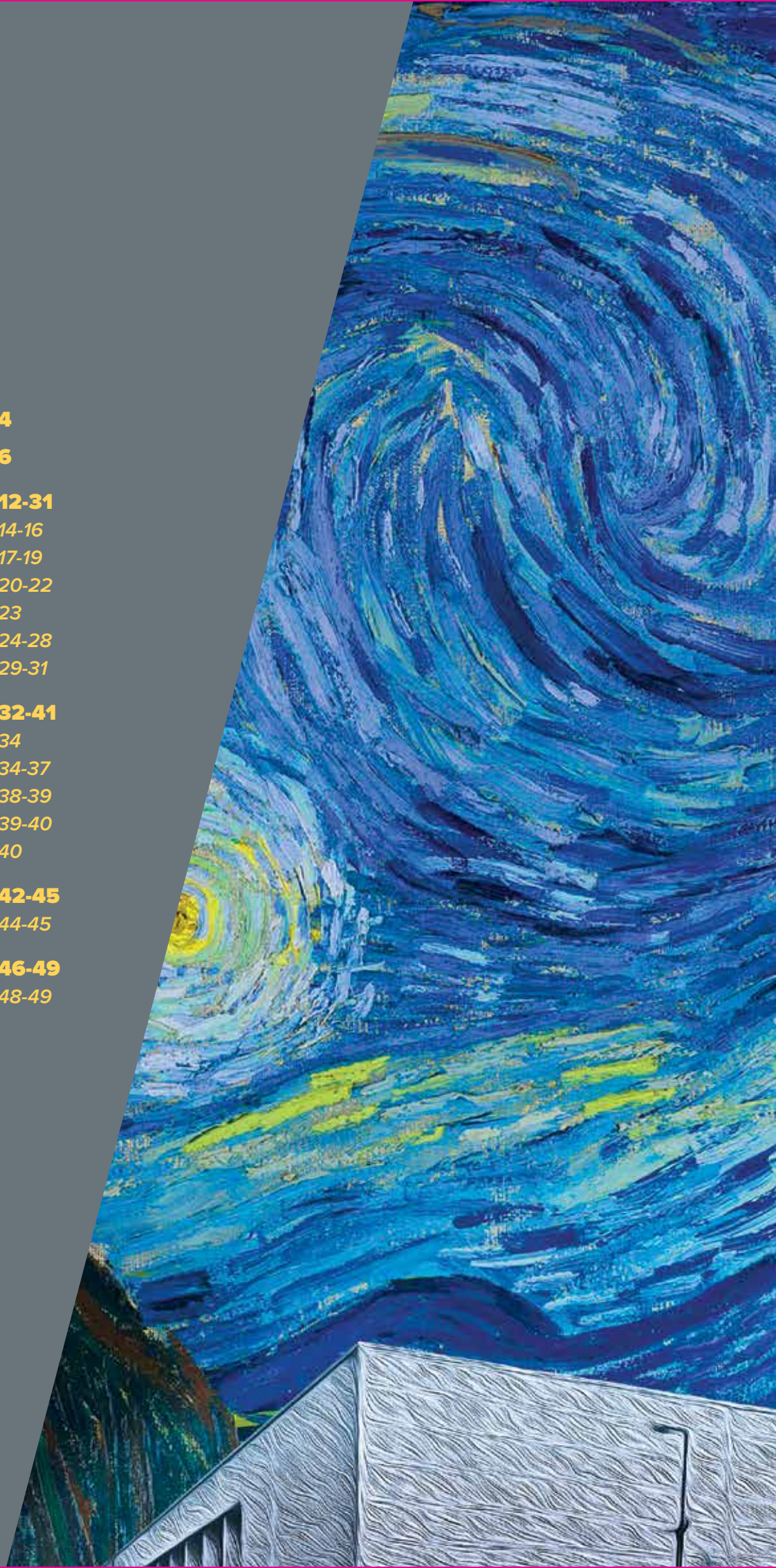
**2019
PRODUCT
CATALOGUE**





INDEX

ABOUT US	4
TYRE READING INFORMATION	6
AGRICULTURAL TYRES	12-31
<i>Radial Tractor Tyres</i>	14-16
<i>Front Tractor Tyres</i>	17-19
<i>Rear Tractor Tyres</i>	20-22
<i>Harvester Tyres</i>	23
<i>Flotation Tyres</i>	24-28
<i>Implement Tyres</i>	29-31
INDUSTRIAL, EM, OTR TYRES	32-41
<i>Radial Em Tyres</i>	34
<i>Em / Industrial Tyres</i>	34-37
<i>Off The Road Tyres</i>	38-39
<i>Compactor Tyres</i>	39-40
<i>Forklift Tyres</i>	40
LCV TYRES	42-45
<i>Light Truck & Minibus Tyres</i>	44-45
MPT TYRES	46-49
<i>Military Tyres</i>	48-49





ABOUT US

ÖZKA Tyre has been established in 1994. It has determined its vision as a leader brand in Turkey market, and as a reputable brand in the global market. It has made its policies and objectives clear, with its strategic plans, which are carried out in a professional manner.

In 2004, ÖZKA has transferred to its new facility, in accordance to its vision. Thanks to this, ÖZKA was able to increase its investments in different tire groups such as Yard / Field, Pickup / Minibus, Trailer, Tractor Front – Rear, Caterpillar, Harvester, Forklift, Panzer, and Radial Tractor tyres. Thus, ÖZKA managed to become the biggest tyre factory in Turkey.

ÖZKA, which works with more than 400 contracted dealers in Turkey, is on the way to become a world brand providing its high-quality products to more than 70 countries around the world.

With its strong, reliable and durable tyres appropriate with national and international standards (TSE, ETRTO, ECE), considers customer satisfaction before and after sales as the fundamental principle. With its Technical Services Team, it responds to proposals, solves complaints and meets requests of customers all around the world in a short time.

ÖZKA, officially certificated as R&D Center since 2017, produces its products with its expertise as a result of innovative works of R&D Center team. It internalises Total Quality Managements and practises; ISO 9001, ISO 14001, OHSAS 18001 ve ISO 27001. Thus, it provides product quality, and product safety from raw material procurement to post-shipment controls.

ÖZKA has signed Global Principles Agreement, and revealed its susceptibility about social responsibilities. While continuously increasing its employment, ÖZKA acts according to the legislative regulations about environment, and work safety. By recycling process scraps, ÖZKA creates added-value for global environment, and economy. Thanks to this approach, it exhibits its difference in the industry.

ÖZKA, which has about 900 employees, considers human resources as the basis of sustainable growth, and keeps its investments for further improvements. It plans, and practices the attending of its employees to domestic and abroad events; such as expos, workshops and trainings in order to follow the sectoral developments and innovations.

INSPIRED FROM VAN GOGH

*When you look at Van Gogh's painting,
you see passion, emotion,
excellence and professionalism.*

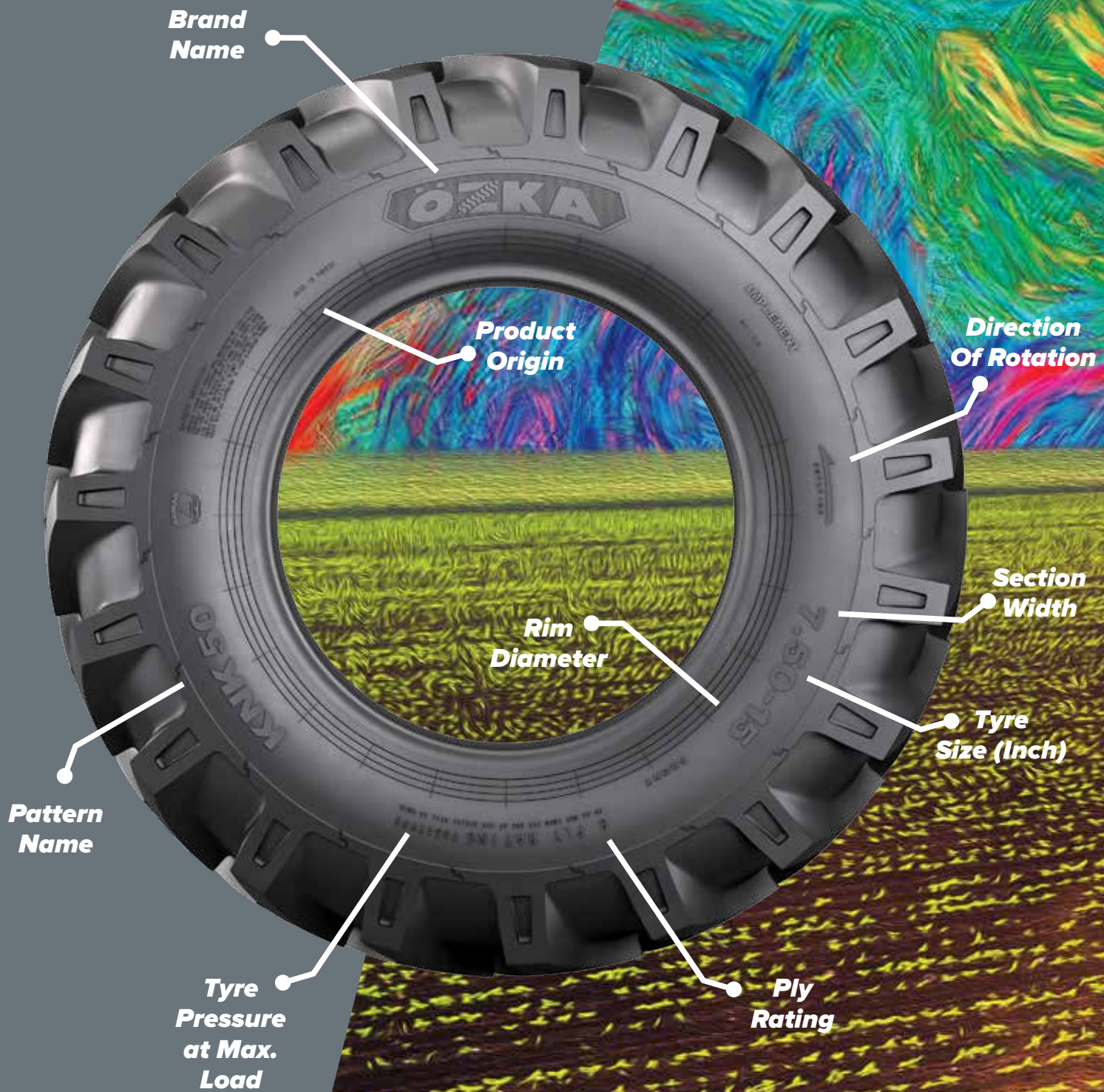
*We have the same passion
as he had to make a difference on his works.*

*That's why, this catalogue is inspired
by his paintings and drawings.*

Regards.

ÖZKA

TYRE READING INFORMATION





RADIAL TRACTOR TYRES



AGR010

AGR011



KNK30



KNK32



KNK33



KNK35



KNK50

REAR TRACTOR TYRES



KNK50



T213



KNK55

HARVESTER TYRES



KNK48



KNK50

FLOTATION TYRES



KNK25



KNK26



KNK27



KNK22



KNK28



KNK42



KNK48



KNK52



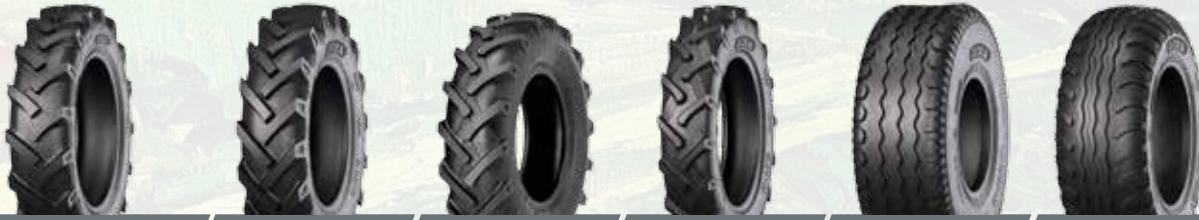
KNK56



KNK46



IMPLEMENT TYRES



KNK50

KNK52

KNK54

KNK140

KNK48

KNK42

RADIAL EM TYRES

EM / INDUSTRIAL TYRES



OR71

KNK44

KNK65

KNK66

IND80

IND85

IND88

OFF THE ROAD TYRES

COMPACTOR TYRES

FORKLIFT TYRES



KNK70

KNK72

KNK74

KNK77

KNK88

KNK40

LIGHT TRUCK & MINIBUS TYRES

MILITARY TYRES



KNK20

KNK24

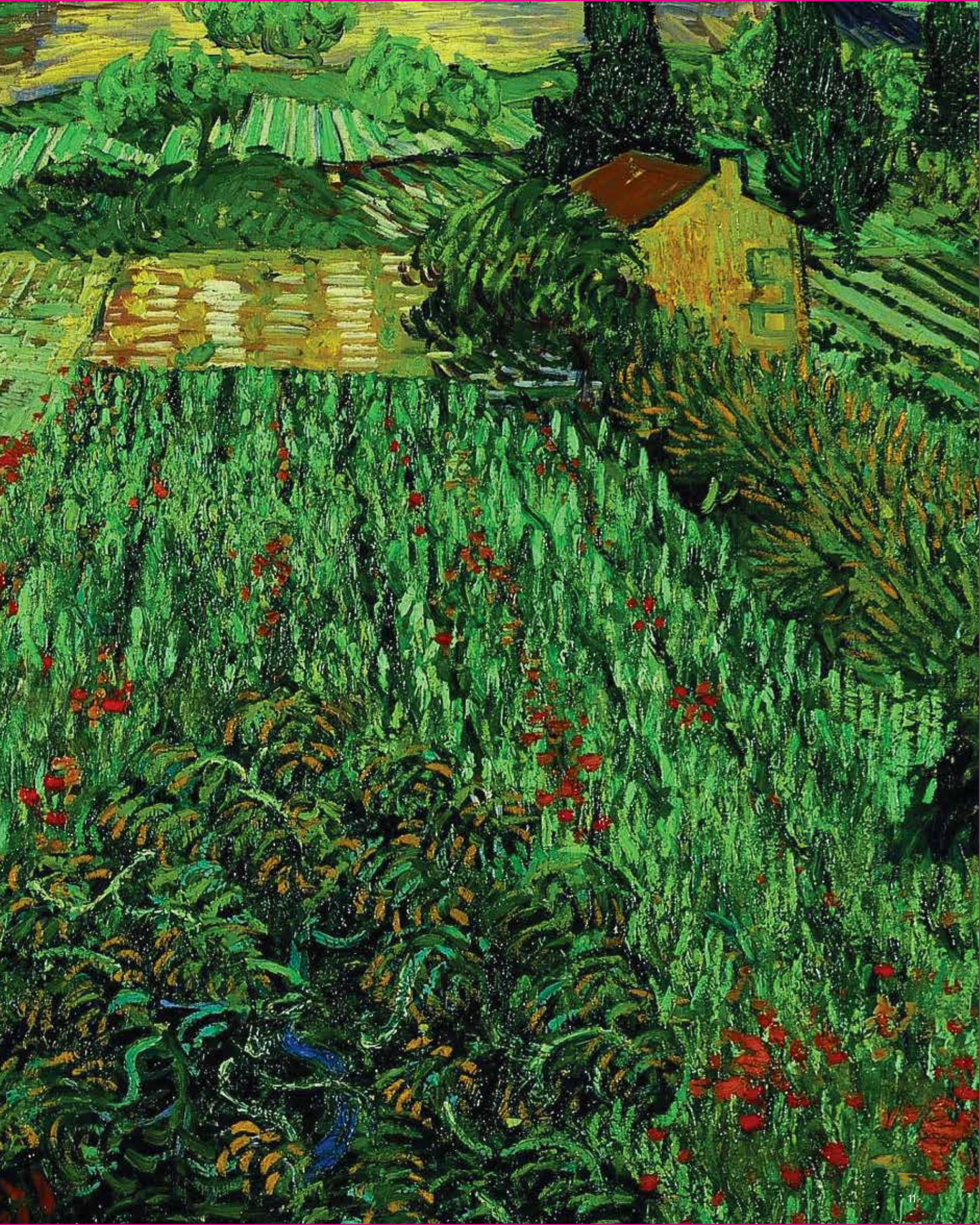
KNK25

KNK126

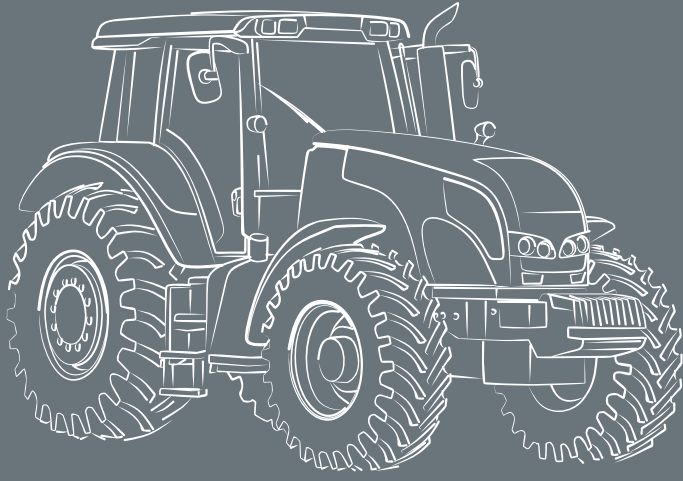
KNK12

KNK10

KNK14



AGRICULTURAL TYRES



AGR010 **AGR011** **KNK30** **KNK32**

KNK33 **KNK35** **KNK50** **T213**

KNK55 **KNK48** **KNK26** **KNK27**

KNK22 **KNK25** **KNK28** **KNK42**

KNK52 **KNK56** **KNK46**

KNK54 **KNK140**

ÖZKA



**RADIAL
TRACTOR TYRES**

AGRO10



- Comfortable drive due to flexible sidewall structure
- Mud repellent feature with its specially designed tread pattern
- High performance due to deep treads and wide base track

Inflated Unloaded Dimensions

Load & Pressure

Product Code	Tyre Size / Ply Rating	TT/TL	Section Width	Overall Diameter	Load Index	Speed Index	Tyre Load Capacity	Tyre Pressure At Max. Load	Dynamic Rolling Circumference	Static Loaded Radius	
			(mm)	(mm)			(Kg)	(Psi)	(mm)	(mm)	
65 SERIES	R6524440	440/65 R24	TL	445	1.185	128/131	D/A8	1800/1950	35	3.555	538
	R6524480	480/65 R24	TL	480	1.235	133/136	D/A8	2060/2240	35	3.705	559
	R6524540	540/65 R24	TL	550	1.320	146/149	D/A8	3000/3250	34	3.960	593
	R6526750	750/65 R26	TL	755	1.640	166/163	A8/B	5300/4875	34	4.920	727
	R6528440	440/65 R28	TL	445	1.285	131/134	D/A8	1950/2120	35	3.855	588
	R6528480	480/65 R28	TL	480	1.337	142/145	D/A8	2650/2900	35	4.011	610
	R6528540	540/65 R28	TL	550	1.420	149/152	D/A8	3250/3550	35	4.260	643
	R6528600	600/65 R28	TL	591	1.491	154/157	D/A8	3750/4125	34	4.473	670
	R6530540	540/65 R30	TL	550	1.470	150/153	D/A8	3350/3650	34	4.410	668
	R6532800	800/65 R32	TL	800	1.858	178/175	A8/B	7500/6900	46	5.574	830
	R6534540	540/65 R34	TL	550	1.575	152/155	D/A8	3550/3875	34	4.725	720
	R6538540	540/65 R38	TL	550	1.675	153/156	D/A8	3650/4000	34	5.025	771
	R6538600	600/65 R38	TL	595	1.750	159/162	D/A8	4375/4750	35	5.250	801
	R6538650	650/65 R38	TL	650	1.820	163/166	D/A8	4875/5300	34	5.460	829
	R6542650	650/65 R42	TL	650	1.913	165/168	D/A8	5150/5600	34	5.739	878
	70 SERIES	R7016240	240/70 R16	TL	245	745	104/104	A8/B	900/900	34	2.235
R7016260		260/70 R16	TL	260	770	109/109	A8/B	1030/1030	34	2.310	350
R7016280		280/70 R16	TL	282	798	112/112	A8/B	1120/1120	34	2.394	362
R7018280		280/70 R18	TL	282	849	114/114	A8/B	1180/1180	34	2.547	388
R7020260		260/70 R20	TL	260	875	113/113	A8/B	1150/1150	34	2.625	403
R7020280		280/70 R20	TL	282	900	116/116	A8/B	1250/1250	34	2.700	413
R7020300		300/70 R20	TL	295	952	120/117	A8/B	1400/1285	34	2.856	434
R7020320		320/70 R20	TL	319	982	113/113	A8/B	1150/1150	23	2.946	446
R7020360		360/70 R20	TL	357	1.042	129/129	A8/B	1850/1850	34	3.126	471
R7020380		380/70 R20	TL	380	1.082	122/122	A8/B	1500/1500	23	3.246	482
R7024320		320/70 R24	TL	319	1.095	116/116	A8/B	1250/1250	23	3.285	502
R7024360		360/70 R24	TL	357	1.152	122/122	A8/B	1500/1500	23	3.456	525
R7024380		380/70 R24	TL	380	1.190	125/125	A8/B	1650/1650	23	3.570	540
R7024420		420/70 R24	TL	418	1.248	130/130	A8/B	1900/1900	23	3.744	564
R7024460		460/70 R24	TL	460	1.260	152/149	A8/B	3550/3250	23	3.780	569
R7024480		480/70 R24	TL	480	1.320	138/135	A8/B	2360/2180	23	3.960	593
R7026480		480/70 R26	TL	480	1.380	139/136	A8/B	2430/2240	23	4.140	622
R7028360		360/70 R28	TL	357	1.255	125/125	A8/B	1650/1650	23	3.765	576
R7028380		380/70 R28	TL	380	1.293	127/127	A8/B	1750/1750	23	3.879	592
R7028420		420/70 R28	TL	418	1.351	133/133	A8/B	2060/2060	23	4.053	615
R7028480		480/70 R28	TL	480	1.425	140/140	A8/B	2500/2500	23	4.275	645
R7030420		420/70 R30	TL	418	1.400	134/131	A8/B	2120/1950	23	4.200	640
R7030480		480/70 R30	TL	480	1.480	141/138	A8/B	2575/2360	23	4.440	672
R7030600		600/70 R30	TL	595	1.605	158/156	A8/B	4250/4000	34	4.815	723
R7034480		480/70 R34	TL	479	1.580	143/140	A8/B	2725/2500	23	4.740	722
R7034520		520/70 R34	TL	516	1.640	148/146	A8/B	3150/3000	23	4.920	745
R7038480		480/70 R38	TL	480	1.685	145/142	A8/B	2900/2650	23	5.055	775
R7038520		520/70 R38	TL	516	1.750	150/147	A8/B	3350/3075	23	5.250	801
R7038580	580/70 R38	TL	580	1.830	155/152	A8/B	3875/3550	23	5.490	833	
R7038710	710/70 R38	TL	720	1.965	171/174	D/A8	6150/6700	34	5.895	888	
R7042710	710/70 R42	TL	720	2.061	173/176	D/A8	6500/7100	34	6.183	922	

RADIAL TRACTOR TYRES

AGRO10

AGRICULTURAL TYRES

Product Code	Tyre Size / Ply Rating	TT/TL	Inflated Unloaded Dimensions		Load Index	Speed Index	Load & Pressure				
			Section Width	Overall Diameter			Tyre Load Capacity	Tyre Pressure At Max. Load	Dynamic Rolling Circumference	Static Loaded Radius	
			(mm)	(mm)			(Kg)	(Psi)	(mm)	(mm)	
80 SERIES	R8042480	480/80 R42	TL	485	1.845	151/148	A8/B	3450/3150	23	5.535	849
	R8046480	480/80 R46	TL	485	1.945	164/164	A8/B	5000/5000	46	5.835	899
85 SERIES	R8520280	280/85 R20 (11.2 R20)	TL	282	984	112/109	A8/B	1120/1030	23	2.952	447
	R8520320	320/85 R20 (12.4 R20)	TL	319	1.052	119/116	A8/B	1360/1250	23	3.156	475
	R8524280	280/85 R24 (11.2 R24)	TL	282	1.086	115/112	A8/B	1215/1120	23	3.258	498
	R8524320	320/85 R24 (12.4 R24)	TL	319	1.154	122/119	A8/B	1500/1360	23	3.462	526
	R8524340	340/85 R24 (13.6 R24)	TL	343	1.188	125/122	A8/B	1650/1500	23	3.564	540
	R8524380	380/85 R24 (14.9 R24)	TL	380	1.256	131/128	A8/B	1950/1800	23	3.768	567
	R8524420	420/85 R24 (16.9 R24)	TL	418	1.324	137/134	A8/B	2300/2060	23	3.972	595
	R8528280	280/85 R28 (11.2 R28)	TL	282	1.187	118/115	A8/B	1320/1215	23	3.561	549
	R8528320	320/85 R28 (12.4 R28)	TL	320	1.255	124/121	A8/B	1600/1450	23	3.765	576
	R8528340	340/85 R28 (13.6 R28)	TL	343	1.289	127/124	A8/B	1750/1600	23	3.867	590
	R8528380	380/85 R28 (14.9 R28)	TL	380	1.357	133/130	A8/B	2060/1900	23	4.071	618
	R8528420	420/85 R28 (16.9 R28)	TL	418	1.425	139/136	A8/B	2430/2240	23	4.275	645
	R8530380	380/85 R30 (14.9 R30)	TL	380	1.408	135/132	A8/B	2180/2000	23	4.224	643
	R8530420	420/85 R30 (16.9 R30)	TL	418	1.476	140/137	A8/B	2500/2300	23	4.428	671
	R8530460	460/85 R30 (18.4 R30)	TL	455	1.544	145/142	A8/B	2900/2650	23	4.632	698
	R8532320	320/85 R32 (12.4 R32)	TL	320	1.365	126/126	A8/B	1700/1700	34	4.095	630
	R8534420	420/85 R34 (16.9 R34)	TL	418	1.578	142/139	A8/B	2650/2430	23	4.734	722
	R8534460	460/85 R34 (18.4 R34)	TL	455	1.646	147/144	A8/B	3075/2800	23	4.938	749
	R8536320	320/85 R36 (12.4 R36)	TL	320	1.465	128/125	A8/B	1800/1650	23	4.395	681
	R8536340	340/85 R36 (13.6 R36)	TL	343	1.495	132/129	A8/B	2000/1850	23	4.485	693
	R8538320	320/85 R38 (12.4 R38)	TL	320	1.515	143/143	A8/B	2725/2725	52	4.545	706
	R8538340	340/85 R38 (13.6 R38)	TL	343	1.545	133/130	A8/B	2060/1900	23	4.635	718
R8538380	380/85 R38 (14.9 R38)	TL	380	1.611	139/136	A8/B	2430/2240	23	4.833	745	
R8538420	420/85 R38 (16.9 R38)	TL	418	1.679	144/141	A8/B	2800/2575	23	5.037	772	
R8538460	460/85 R38 (18.4 R38)	TL	455	1.747	149/146	A8/B	3250/3000	23	5.241	800	
R8538520	520/85 R38 (20.8 R38)	TL	516	1.849	155/152	A8/B	3875/3550	23	5.547	841	
R8538650	650/85 R38	TL	650	2.071	173/176	D/A8	6500/7100	34	6.213	935	
R8542520	520/85 R42 (20.8 R42)	TL	516	1.955	157/157	A8/B	4125/4125	23	5.865	894	
R8546340	340/85 R46 (13.6 R46)	TL	345	1.756	150/151	D/A8	3350/3450	52	5.268	823	
R8548340	340/85 R48 (13.6 R48)	TL	343	1.800	151/152	D/A8	3450/3550	58	5.490	845	
90 SERIES	R9046320	320/90 R46	TL	320	1.750	146/146	A8/B	3000/3000	46	5.250	820
	R9046380	380/90 R46	TL	380	1.860	159/162	D/A8	4375/4750	58	5.580	865
	R9050320	320/90 R50	TL	320	1.850	150/150	A8/B	3350/3350	52	5.643	870
	R9054320*	320/90 R54	TL	320	1.950	155/155	A8/B	3875/3875	58	5.950	921
95 SERIES	R9520	9.5 R20	TL	241	938	108/105	A8/B	1000/925	23	2.814	422
	R9532210	210/95 R32	TL	215	1.215	114/114	A8/B	1180/1180	34	3.706	570
	R9532230	230/95 R32	TL	230	1.255	128/128	A8/B	1800/1800	58	3.828	586
	R9532270	270/95 R32	TL	275	1.330	136/136	A8/B	2240/2240	58	4.057	616
	R9536210	210/95 R36	TL	215	1.320	118/118	A8/B	1320/1320	34	4.026	617
	R9536230	230/95 R36	TL	230	1.355	130/130	A8/B	1900/1900	58	4.065	640
	R9536270	270/95 R36	TL	275	1.435	139/139	A8/B	2430/2430	58	4.377	668
	R9538270	270/95 R38	TL	275	1.485	140/140	A8/B	2500/2500	58	4.529	694
	R9542230	230/95 R42	TL	230	1.505	133/136	D/A8	2060/2240	58	4.515	712
	R9544210	210/95 R44	TL	215	1.520	120/120	A8/B	1400/1400	34	4.560	722
	R9544230	230/95 R44	TL	230	1.560	132/132	A8/B	2000/2000	58	4.758	738
	R9544270	270/95 R44	TL	275	1.635	142/142	A8/B	2650/2650	58	4.987	769
	R9546270	270/95 R46	TL	275	1.685	143/143	A8/B	2725/2725	58	5.139	794
	R9546300	300/95 R46	TL	300	1.740	148/148	A8/B	3150/3150	58	5.307	816
	R9548230	230/95 R48	TL	230	1.660	136/136	A8/B	2240/2240	58	5.063	789
	R9548270	270/95 R48	TL	275	1.735	144/144	A8/B	2800/2800	58	5.292	819
R9552300*	300/95 R52	TL	300	1.900	156/159	D/A8	4000/4375	58	5.795	895	
R9554270*	270/95 R54	TL	275	1.885	146/146	A8/B	3000/3000	58	5.750	894	

* THE SIZE IS IN PRODUCT DEVELOPMENT PROGRAM

**RADIAL
TRACTOR TYRES**



- Comfortable drive due to flexible sidewall structure
- Mud repellent feature with its specially designed tread pattern
- High performance due to deep treads and wide base track

	Product Code	Tyre Size / Ply Rating	TT/TL	Inflated Unloaded Dimensions				Load & Pressure			
				Section Width	Overall Diameter	Load Index	Speed Index	Tyre Load Capacity	Tyre Pressure At Max. Load	Dynamic Rolling Circumference	Static Loaded Radius
				(mm)	(mm)			(Kg)	(Psi)	(mm)	(mm)
70 SERIES	R704262011	620/70 R42	TL	625	1.935	166/166	A8/B	5300/5300	46	5.805	876
75 SERIES	R752662011	620/75 R26	TL	630	1.600	166/166	A8/B	5300/5300	46	4.800	711
	R753062011	620/75 R30	TL	630	1.695	163/161	A8/B	4875/4625	35	5.085	759
	R753265011	650/75 R32	TL	650	1.795	172/172	A8/B	6300/6300	46	5.385	805

**FRONT
TRACTOR TYRES**

KNK30



- Tractor front tyre for general use
- Its strong and robust body is resistant to stone and impacts
- Gutters at central back provide smooth driving
- Treads in shoulders prevent skidding
- Long lasting and economic use
- Has excellent performance in highway and land

Inflated Unloaded Dimensions

Load & Pressure

Product Code	Tyre Size / Ply Rating	TT/TL	Section Width	Overall Diameter	Load Index	Speed Index	Tyre Load Capacity	Tyre Pressure At Max. Load	Dynamic Rolling Circumference	Static Loaded Radiu	
			(mm)	(mm)							(Kg)
KNK30	3102	6.00-16 6PR	TT	165	735	88	A6	560	48	2.242	335
	3103	6.00-16 8PR	TT	165	735	93	A6	650	48	2.242	335
	3202	6.50-16 6PR	TT	175	760	91	A6	615	45	2.318	345
	3203	6.50-16 8PR	TT	175	760	97	A6	730	54	2.318	345
	3402	7.50-16 6PR	TT	205	805	98	A6	750	41	2.455	363
	3403	7.50-16 8PR	TT	205	805	103	A6	875	54	2.455	363

KNK32



- Long lasting front tractor tyre
- Increase maneuverability thanks to nondirectional use feature
- Resistant structure against punctures thanks to increased tread depth

Inflated Unloaded Dimensions

Load & Pressure

Product Code	Tyre Size / Ply Rating	TT/TL	Section Width	Overall Diameter	Load Index	Speed Index	Tyre Load Capacity	Tyre Pressure At Max. Load	Dynamic Rolling Circumference	Static Loaded Radiu	
			(mm)	(mm)							(Kg)
KNK32	3412	7.50-16 6PR	TT	205	805	98	A6	750	41	2.455	363
	3413	7.50-16 8PR	TT	205	805	103	A6	875	54	2.455	363
	3513	7.50-18 8PR	TT	205	860	106	A6	950	54	2.623	390
	3553	6.50-20 8PR	TT	175	865	102	A6	850	54	2.638	397
	3603	7.50-20 8PR	TT	205	915	108	A6	1000	49	2.791	417



**FRONT
TRACTOR TYRES**

KNK33

- Extra strong with its increased tread depth
- Comfortable driving in the field and on the road by pattern design
- Mud-free pattern

Inflated Unloaded Dimensions

Load & Pressure

Product Code	Tyre Size / Ply Rating	TT/TL	Section Width	Overall Diameter	Load Index	Speed Index	Tyre Load Capacity	Tyre Pressure At Max. Load	Dynamic Rolling Circumference	Static Loaded Radius	
			(mm)	(mm)			(Kg)	(Psi)	(mm)	(mm)	
KNK33	3132	6.00-16 6PR	TT	165	735	88	A6	560	48	2.242	335
	3133	6.00-16 8PR	TT	165	735	93	A6	650	48	2.242	335
	3232	6.50-16 6PR	TT	175	760	91	A6	615	45	2.318	345
	3233	6.50-16 8PR	TT	175	760	97	A6	730	54	2.318	345
	3472	7.50-16 6PR	TT	205	805	98	A6	750	41	2.455	363
	3473	7.50-16 8PR	TT	205	805	103	A6	875	54	2.455	363
	3542	6.00-19 6PR	TT	165	814	93	A6	650	48	2.483	374



KNK35

- Suitable to asphalt and land usage
- Excellent maneuverability and nondirectional use
- Resistant structure against punctures
- Straight movement stability in soft land

Inflated Unloaded Dimensions

Load & Pressure

Product Code	Tyre Size / Ply Rating	TT/TL	Section Width	Overall Diameter	Load Index	Speed Index	Tyre Load Capacity	Tyre Pressure At Max. Load	Dynamic Rolling Circumference	Static Loaded Radius	
			(mm)	(mm)			(Kg)	(Psi)	(mm)	(mm)	
KNK35	3052	5.50-16 6PR	TT	150	710	86	A6	530	54	2.166	325
	3112	6.00-16 6PR	TT	165	735	88	A6	560	48	2.242	335
	3113	6.00-16 8PR	TT	165	735	93	A6	650	48	2.242	335
	3212	6.50-16 6PR	TT	175	760	91	A6	615	45	2.318	345
	3213	6.50-16 8PR	TT	175	760	97	A6	730	54	2.318	345
	3432	7.50-16 6PR	TT	205	805	98	A6	750	41	2.455	363
	3433	7.50-16 8PR	TT	205	805	103	A6	875	54	2.455	363
	3463	9.00-16 8PR	TT	234	855	111	A6	1090	45	2.608	383
	3483	10.00-16 8PR	TT	274	895	115	A6	1215	41	2.730	399
	3493	11.00-16 8PR	TT	315	965	118	A6	1320	36	2.943	427
	3503	7.50-18 8PR	TT	205	860	106	A6	950	54	2.623	390

FRONT TRACTOR TYRES

KNK50

- High traction
- Easy movement ability with anti-ground feature
- Preventing clusters in the center and sidewalls during movement
- Facilitating releasing of muds thanks to windowed blocks

Inflated Unloaded Dimensions

Load & Pressure

Product Code	Tyre Size / Ply Rating	TT/TL	Inflated Unloaded Dimensions		Load Index	Speed Index	Load & Pressure			
			Section Width (mm)	Overall Diameter (mm)			Tyre Load Capacity (Kg)	Tyre Pressure At Max. Load (Psi)	Dynamic Rolling Circumference (mm)	Static Loaded Radius (mm)
3003	7.50-15 8PR	TT	205	780	99	A6	775	52	2.379	350
3122	6.00-16 6PR	TT	165	735	88	A6	560	48	2.242	335
3123	6.00-16 8PR	TT	165	735	93	A6	650	48	2.242	335
3222	6.50-16 6PR	TT	175	760	91	A6	615	45	2.318	345
3223	6.50-16 8PR	TT	175	760	97	A6	730	54	2.318	345
3423	7.50-16 8PR	TT	205	805	103	A6	875	54	2.455	363
3523	7.50-18 8PR	TT	205	860	106	A6	950	54	2.623	390
3623	7.50-20 8PR	TT	205	915	108	A6	1000	49	2.791	417
3652	9.5-20 6PR	TT	241	940	101	A6	825	30	2.867	427
3653	9.5-20 8PR	TT	241	940	106	A6	950	35	2.867	427
3663	9.5-20 8PR	TL	241	940	106	A6	950	35	2.867	427
3673	11.2-20 8PR	TT	285	1.005	113	A6	1150	38	3.065	453
3683	11.2-20 8PR	TL	285	1.005	113	A6	1150	38	3.065	453

KNK50

REAR
TRACTOR TYRES

KNK50



- High traction
- Easy movement ability with anti-ground feature
- Preventing clusters in the center and sidewalls during movement
- Facilitating releasing of muds thanks to windowed blocks

Inflated Unloaded Dimensions

Load & Pressure

Product Code	Tyre Size / Ply Rating	TT/TL	Section Width	Overall Diameter	Load Index	Speed Index	Tyre Load Capacity	Tyre Pressure At Max. Load	Dynamic Rolling Circumference	Static Loaded Radius
			(mm)	(mm)			(Kg)	(Psi)	(mm)	(mm)
5002	8.3-24 6PR	TT	210	1.009	105	A6	925	30	3.077	465
5003	8.3-24 8PR	TT	210	1.009	108	A6	1000	35	3.077	465
5102	9.5-24 6PR	TT	241	1.050	110	A6	1060	26	3.203	481
5103	9.5-24 8PR	TT	241	1.050	116	A6	1250	34	3.203	481
5112	11.2-24 6PR	TT	284	1.105	110	A6	1060	26	3.370	503
5113	11.2-24 8PR	TT	284	1.105	116	A6	1250	34	3.370	503
5115	11.2-24 12PR	TT	284	1.105	122	A6	1500	40	3.370	503
5122	12.4-24 6PR	TT	315	1.160	115	A6	1215	24	3.538	525
5123	12.4-24 8PR	TT	315	1.160	118	A6	1320	29	3.538	525
5123M	320/85-24 8PR	TT	315	1.160	118	A6	1320	29	3.538	525
5125	12.4-24 12PR	TT	315	1.160	124	A6	1600	35	3.538	525
5125M	320/85-24 12PR	TT	315	1.160	124	A6	1600	35	3.538	525
5132	13.6-24 6PR	TT	345	1.210	120	A6	1400	22	3.691	545
5133	13.6-24 8PR	TT	345	1.210	123	A6	1550	28	3.691	545
5135	13.6-24 12PR	TT	345	1.210	129	A6	1850	34	3.691	545
5142	14.9-24 6PR	TT	378	1.265	125	A6	1650	20	3.858	567
5143	14.9-24 8PR	TT	378	1.265	128	A6	1800	26	3.858	567
5143M	380/85-24 8PR	TT	378	1.265	128	A6	1800	26	3.858	567
5144	14.9-24 10PR	TT	378	1.265	131	A6	1950	30	3.858	567
5144M	380/85-24 10PR	TT	378	1.265	131	A6	1950	30	3.858	567
5146	14.9-24 14PR	TT	378	1.265	137	A6	2300	38	3.858	567
5195	15.5/80-24 12PR	TL	394	1.260	157	A6	4125	44	3.843	565
5197	15.5/80-24 16PR	TL	394	1.260	163	A6	4875	58	3.843	565
5053*	16.9-24 8PR	TT	429	1.335	133	A6	2060	25	4.072	595
5054*	16.9-24 10PR	TT	429	1.335	136	A6	2240	29	4.072	595
5056*	16.9-24 14PR	TT	429	1.335	141	A6	2575	35	4.072	595
5184	14.9-26 10PR	TT	378	1.315	133	A6	2060	30	4.011	592
5186	14.9-26 14PR	TT	378	1.315	140	A6	2500	39	4.011	592
5154	18.4-26 10PR	TT	467	1.461	142	A6	2650	26	4.456	650
5157	18.4-26 16PR	TT	467	1.461	150	A6	3350	40	4.456	650
5202	11.2-28 6PR	TT	284	1.205	112	A6	1120	26	3.675	553
5203	11.2-28 8PR	TT	284	1.205	118	A6	1320	34	3.675	553
5212	12.4-28 6PR	TT	315	1.260	117	A6	1285	25	3.843	575
5213	12.4-28 8PR	TT	315	1.260	125	A6	1650	30	3.843	575
5213M	320/85 28 8PR	TT	315	1.260	125	A6	1650	30	3.843	575
5222	13.6-28 6PR	TT	345	1.310	121	A6	1450	23	3.996	595
5223	13.6-28 8PR	TT	345	1.310	125	A6	1650	29	3.996	595
5232	14.9-28 6PR	TT	378	1.365	125	A6	1650	20	4.163	617
5233	14.9-28 8PR	TT	378	1.365	130	A6	1900	26	4.163	617
5236	14.9-28 14PR	TT	378	1.365	143	A6	2725	40	4.163	617
5253	16.9-28 8PR	TT	429	1.435	135	A6	2180	24	4.377	645

KNK50

REAR TRACTOR TYRES

KNK50

AGRICULTURAL TYRES



- High traction
- Easy movement ability with anti-ground feature
- Preventing clusters in the center and sidewalls during movement
- Facilitating releasing of muds thanks to windowed blocks

Inflated Unloaded Dimensions

Load & Pressure

Product Code	Tyre Size / Ply Rating	TT/TL	Inflated Unloaded Dimensions		Load Index	Speed Index	Load & Pressure			
			Section Width (mm)	Overall Diameter (mm)			Tyre Load Capacity (Kg)	Tyre Pressure At Max. Load (Psi)	Dynamic Rolling Circumference (mm)	Static Loaded Radiu (mm)
5254	16.9-28 10PR	TT	429	1.435	139	A6	2430	29	4.377	645
5256	16.9-28 14PR	TT	429	1.435	143	A6	2725	34	4.377	645
5303	14.9-30 8PR	TT	378	1.415	132	A6	2000	26	4.316	642
5304	14.9-30 10PR	TT	378	1.415	136	A6	2240	29	4.316	642
5313	16.9-30 8PR	TT	429	1.485	137	A6	2300	25	4.529	670
5314	16.9-30 10PR	TT	429	1.485	144	A6	2800	28	4.529	670
5316	16.9-30 14PR	TT	429	1.485	150	A6	3350	34	4.529	670
5316M	420/85-30 14PR	TT	429	1.485	150	A6	3350	34	4.529	670
5323	18.4-30 8PR	TT	467	1.550	139	A6	2430	20	4.728	696
5323M	460/85-30 8PR	TT	467	1.550	139	A6	2430	20	4.728	696
5324	18.4-30 10PR	TT	467	1.550	145	A6	2900	26	4.728	696
5324M	460/85-30 10PR	TT	467	1.550	145	A6	2900	26	4.728	696
5326	18.4-30 14PR	TT	467	1.550	154	A6	3750	40	4.728	696
5326M	460/85-30 14PR	TT	467	1.550	154	A6	3750	40	4.728	696
5413	8.3-32 8PR	TT	211	1.195	111	A6	1090	46	3.645	559
5423	9.5-32 8PR	TT	241	1.250	115	A6	1215	39	3.813	581
5433	12.4-32 8PR	TT	315	1.360	125	A6	1650	32	4.148	625
5514	16.9-34 10PR	TT	429	1.585	142	A6	2650	29	4.834	720
5514M	420/85-34 10PR	TT	429	1.585	142	A6	2650	29	4.834	720
5516	16.9-34 14PR	TT	429	1.585	148	A6	3150	37	4.834	720
5516M	420/85-34 14PR	TT	429	1.585	148	A6	3150	37	4.834	720
5524	18.4-34 10PR	TT	467	1.650	146	A6	3000	26	5.033	746
5524M	460/85-34 10PR	TT	467	1.650	146	A6	3000	26	5.033	746
5526	18.4-34 14PR	TT	467	1.650	153	A6	3650	36	5.033	746
5527	18.4-34 16PR	TT	467	1.650	159	A6	4375	45	5.033	746
5602	12.4-36 6PR	TT	315	1.465	121	A6	1450	24	4.468	677
5603	12.4-36 8PR	TT	315	1.465	126	A6	1700	29	4.468	677
5612	13.6-36 6PR	TT	345	1.515	125	A6	1650	23	4.621	697
5613	13.6-36 8PR	TT	345	1.515	129	A6	1850	29	4.621	697
5643	12.4-38 8PR	TT	315	1.515	127	A6	1750	29	4.621	703
5703	13.6-38 8PR	TT	345	1.565	131	A6	1950	29	4.773	723
5704	13.6-38 10PR	TT	345	1.565	135	A6	2180	33	4.773	723
5713	14.00-38 8PR	TT	345	1.565	131	A6	1950	29	4.773	723
5714	14.00-38 10PR	TT	345	1.565	135	A6	2180	33	4.773	723
5724	15.5-38 10PR	TT	394	1.570	138	A6	2360	33	4.789	725
5725	15.5-38 12PR	TT	394	1.570	141	A6	2575	38	4.789	725
5734	16.9-38 10PR	TT	429	1.685	145	A6	2900	30	5.139	771
5736	16.9-38 14PR	TT	429	1.685	152	A6	3550	40	5.139	771
5744	18.4-38 10PR	TT	467	1.750	147	A6	3075	26	5.338	797
5746	18.4-38 14PR	TT	467	1.750	154	A6	3750	36	5.338	797

KNK50

**REAR
TRACTOR TYRES**

T213



- High traction
- Easy movement ability with anti-ground feature
- Preventing clusters in the center and sidewalls during movement
- Facilitating releasing of muds thanks to windowed blocks

Inflated Unloaded Dimensions

Load & Pressure

Product Code	Tyre Size / Ply Rating	TT/TL	Inflated Unloaded Dimensions		Load Index	Speed Index	Load & Pressure				
			Section Width (mm)	Overall Diameter (mm)			Tyre Load Capacity (Kg)	Tyre Pressure At Max. Load (Psi)	Dynamic Rolling Circumference (mm)	Static Loaded Radius (mm)	
T213	5333*	16.9-30 8PR	TT	429	1.485	137	A6	2300	25	4.529	670
	5334	16.9-30 10PR	TT	429	1.485	144	A6	2800	28	4.529	670
	5335	16.9-30 12PR	TT	429	1.485	144	A6	2800	28	4.529	670
	5336*	16.9-30 14PR	TT	429	1.485	150	A6	3350	34	4.529	670
	5755*	15.5-38 12PR	TT	394	1.570	141	A6	2575	38	4.789	725
	5764*	16.9-38 10PR	TT	429	1.685	145	A6	2900	30	5.139	771

KNK55



- High traction
- Easy movement ability with anti-ground feature
- Preventing clusters in the center and sidewalls during movement
- Facilitating releasing of muds thanks to windowed blocks

Inflated Unloaded Dimensions

Load & Pressure

Product Code	Tyre Size / Ply Rating	TT/TL	Inflated Unloaded Dimensions		Load Index	Speed Index	Load & Pressure				
			Section Width (mm)	Overall Diameter (mm)			Tyre Load Capacity (Kg)	Tyre Pressure At Max. Load (Psi)	Dynamic Rolling Circumference (mm)	Static Loaded Radius (mm)	
KNK55	5167	14.9-24 6PR (IRRIGATION)	TT	378	1.265	123	A6	1550	20	3.858	567
	5168	14.9-24 8PR (IRRIGATION)	TT	378	1.265	127	A6	1750	26	3.858	567

HARVESTER TYRES

KNK48



- Highway, agricultural and off-road tyre with high load bearing capacity and low section
- Minimum ground holding feature thanks to wide circumference channels
- Moving forward easily without submerging thanks to its wide tread pattern
- Resistant structure against punctures thanks to increased tread depth

Inflated Unloaded Dimensions

Load & Pressure

Product Code	Tyre Size / Ply Rating	TT/TL	Section Width	Overall Diameter	Load Index	Speed Index	Tyre Load Capacity	Tyre Pressure At Max. Load	Dynamic Rolling Circumference	Static Loaded Radius	
			(mm)	(mm)							(Kg)
KNK48	4605	10.5/80-18 12PR	TT	274	885	135	A8	2180	65	2.699	400
	4626	12.5/80-18 14PR	TT	308	965	144	A8	2800	63	2.943	432
	4647	13.0/65-18 16PR	TT	336	890	144	A8	2800	66	2.715	402

KNK50



- High traction
- Easy movement ability with anti-ground feature
- Preventing clusters in the center and sidewalls during movement
- Facilitating releasing of muds thanks to windowed blocks

Inflated Unloaded Dimensions

Load & Pressure

Product Code	Tyre Size / Ply Rating	TT/TL	Section Width	Overall Diameter	Load Index	Speed Index	Tyre Load Capacity	Tyre Pressure At Max. Load	Dynamic Rolling Circumference	Static Loaded Radius	
			(mm)	(mm)							(Kg)
KNK50	5178	23.1-26 18PR	TL	587	1.605	162	A6	4750	37	4.895	708
	6737	18.4-30 16PR	TT	467	1.550	158	A6	4250	45	4.728	696
	6737M	460/85-30 16PR	TT	467	1.550	158	A6	4250	45	4.728	696
	5358	23.1-30 18PR	TL	587	1.715	160	A6	4500	36	5.231	762
	5757	20.8-38 16PR	TT	528	1.840	162	A6	4750	39	5.612	833
	5767	20.8-38 16PR	TL	528	1.840	162	A6	4750	39	5.612	833

**FLOTATION
TYRES**

KNK25



- Resistance to stone and impacts thanks to its improved base
- General purpose trailer tyre
- Long lasting and economic use
- Has excellent performance in highway and land
- Mud-repellent thanks to its special pattern, enhance traction

Inflated Unloaded Dimensions

Load & Pressure

Product Code	Tyre Size / Ply Rating	TT/TL	Inflated Unloaded Dimensions		Load Index	Speed Index	Load & Pressure				
			Section Width	Overall Diameter			Tyre Load Capacity	Tyre Pressure At Max. Load	Dynamic Rolling Circumference	Static Loaded Radius	
			(mm)	(mm)			(Kg)	(Psi)	(mm)	(mm)	
KNK25	4425	7.50-16 12PR	TT	214	787	121	A8	1450	72	2.400	346
	4706	8.25-20 14PR	TT	234	970	133	A6	2060	90	2.959	427

KNK26



- Resistant to stone and impacts thanks to its improved base
- General purposed trailer tyre
- Long lasting and economic use
- Has excellent performance in highway and land
- Mud-repellent thanks to its special pattern, enhance traction

Inflated Unloaded Dimensions

Load & Pressure

Product Code	Tyre Size / Ply Rating	TT/TL	Inflated Unloaded Dimensions		Load Index	Speed Index	Load & Pressure				
			Section Width	Overall Diameter			Tyre Load Capacity	Tyre Pressure At Max. Load	Dynamic Rolling Circumference	Static Loaded Radius	
			(mm)	(mm)			(Kg)	(Psi)	(mm)	(mm)	
KNK26	4515	9.00-16 12PR	TT	247	865	125	A6	1650	58	2.638	375
	4516	9.00-16 14PR	TT	247	865	128	A6	1800	67	2.638	375

FLOTATION TYRES

KNK27



- *Balanced driving and excellent traction thanks to its special design*
- *Increased water and mud discharge thanks to surrounded gutters*
- *Strong frame structure and high wear resistance*
- *Comfortable driving*
- *Retreadability feature*

Inflated Unloaded Dimensions

Load & Pressure

Product Code	Tyre Size / Ply Rating	TT/TL	Inflated Unloaded Dimensions		Load Index	Speed Index	Load & Pressure			
			Section Width	Overall Diameter			Tyre Load Capacity	Tyre Pressure At Max. Load	Dynamic Rolling Circumference	Static Loaded Radiu
			(mm)	(mm)						
4505	9.00-16 12PR	TT	247	865	125	A6	1650	58	2.638	375
4506	9.00-16 14PR	TT	247	865	128	A6	1800	67	2.638	375

KNK27

KNK22



- *Resistant to stone and impacts thanks to its improved base*
- *General purposed trailer tyre*
- *Long lasting and economic use*
- *Has excellent performance in highway and land*
- *Mud-repellent thanks to its special pattern, enhance traction*

Inflated Unloaded Dimensions

Load & Pressure

Product Code	Tyre Size / Ply Rating	TT/TL	Inflated Unloaded Dimensions		Load Index	Speed Index	Load & Pressure			
			Section Width	Overall Diameter			Tyre Load Capacity	Tyre Pressure At Max. Load	Dynamic Rolling Circumference	Static Loaded Radiu
			(mm)	(mm)						
4716	9.00-20 14PR	TT	247	1.017	133	A6	2060	81	3.102	445

KNK22

**FLOTATION
TYRES**

KNK28



- Convenient to use in asphalt and land thanks to back pattern
- Durable side wall with strong structure
- Soil holding feature with complex tread structure and channels
- Providing straight location to the ground thanks to back design

Product Code	Tyre Size / Ply Rating	TT/TL	Inflated Unloaded Dimensions				Load & Pressure			
			Section Width	Overall Diameter	Load Index	Speed Index	Tyre Load Capacity	Tyre Pressure At Max. Load	Dynamic Rolling Circumference	Static Loaded Radius
			(mm)	(mm)			(Kg)	(Psi)	(mm)	(mm)
KNK28 4445	7.50-16 12PR	TT	214	787	121	A8	1450	72	2.400	346

KNK42



- High load bearing capacity with strong structure and less soil compression with its wide base
- Anti-ground tread design

Product Code	Tyre Size / Ply Rating	TT/TL	Inflated Unloaded Dimensions				Load & Pressure			
			Section Width	Overall Diameter	Load Index	Speed Index	Tyre Load Capacity	Tyre Pressure At Max. Load	Dynamic Rolling Circumference	Static Loaded Radius
			(mm)	(mm)			(Kg)	(Psi)	(mm)	(mm)
KNK42 4215	260/70-15.3 (10.0/75-15.3) 12PR	TL	268	753	126	A8	1700	52	2.297	331
KNK42 4236	300/80-15.3 (11.5/80-15.3) 14PR	TL	295	869	141	A8	2575	58	2.650	374

FLOTATION TYRES

KNK48



- Highway, agricultural and off-road tyre with high load bearing capacity and low section
- Minimum ground holding feature thanks to wide circumference channels
- Moving forward easily without submerging thanks to its wide tread pattern
- Resistant structure against punctures thanks to increased tread depth

Inflated Unloaded Dimensions

Load & Pressure

Product Code	Tyre Size / Ply Rating	TT/TL	Section Width	Overall Diameter	Load Index	Speed Index	Tyre Load Capacity	Tyre Pressure At Max. Load	Dynamic Rolling Circumference	Static Loaded Radiu
			(mm)	(mm)						
			(Kg)	(Psi)						
4365	10.0/75-15.3 (260/70-15.3) 12PR	TL	264	760	126	A8	1700	68	2.318	334
4376	11.5/80-15.3 (300/80-15.3) 14PR	TL	290	845	139	A8	2430	69	2.577	365
4386	12.5/80-15.3 (320/80-15.3) 14PR	TL	307	889	142	A8	2650	62	2.711	382
4525	10.5/65-16 (265/65-16) 12PR	TT	274	755	126	A8	1700	65	2.303	334

KNK48

KNK52

- High load bearing capacity with low section off-road and agricultural tyre
- Holding features for dry and wet grounds thanks to its pattern

Inflated Unloaded Dimensions

Load & Pressure

Product Code	Tyre Size / Ply Rating	TT/TL	Section Width	Overall Diameter	Load Index	Speed Index	Tyre Load Capacity	Tyre Pressure At Max. Load	Dynamic Rolling Circumference	Static Loaded Radiu
			(mm)	(mm)						
			(Kg)	(Psi)						
4335	10.0/75-15.3 (260/70-15.3) 12PR	TL	264	760	126	A8	1700	68	2.318	334
4346	11.5/80-15.3 (300/80-15.3) 14PR	TL	290	845	139	A8	2430	69	2.577	365

KNK52

**FLOTATION
TYRES**

KNK56



- Extra strong against stretching thanks to strong frame structure
- Flexibility and deep tread profile

Inflated Unloaded Dimensions

Load & Pressure

Product Code	Tyre Size / Ply Rating	TT/TL	Section Width	Overall Diameter	Load Index	Speed Index	Tyre Load Capacity	Tyre Pressure At Max. Load	Dynamic Rolling Circumference	Static Loaded Radius	
			(mm)	(mm)			(Kg)	(Psi)	(mm)	(mm)	
KNK56	4397	12.5/80-15.3 (320/80-15.3) 16PR	TL	307	889	144	A8	2800	71	2.711	382
	4418	400/60-15.5 18PR	TL	404	874	151	A8	3450	90	2.666	377
	4847	550/60-22.5 16PR	TL	543	1,244	154	A8	3750	41	3.794	538

KNK46



- Soil tillage, transport and hay harvesting applications with implement machinery, trailers and hay harvesters/balers
- The special tread compound resulting in exceptional cut and strong tread along with excellent wear resistance on all types of terrains

Inflated Unloaded Dimensions

Load & Pressure

Product Code	Tyre Size / Ply Rating	TT/TL	Section Width	Overall Diameter	Load Index	Speed Index	Tyre Load Capacity	Tyre Pressure At Max. Load	Dynamic Rolling Circumference	Static Loaded Radius	
			(mm)	(mm)			(Kg)	(Psi)	(mm)	(mm)	
KNK46	4566	500/50-17 14PR	TL	503	932	149	A8	3250	41	2.843	403
	4568	500/50-17 18PR	TL	503	932	157	A8	4125	70	2.843	403

IMPLEMENT TYRES

KNK50



- High traction
- Easy movement ability with anti-ground feature
- Preventing clusters in the center and sidewalls during movement
- Facilitating releasing of muds thanks to windowed blocks

Inflated Unloaded Dimensions

Load & Pressure

Product Code	Tyre Size / Ply Rating	TT/TL	Section Width	Overall Diameter	Load Index	Speed Index	Tyre Load Capacity	Tyre Pressure At Max. Load	Dynamic Rolling Circumference	Static Loaded Radiu
			(mm)	(mm)			(Kg)	(Psi)	(mm)	(mm)
1812	6.50/80-15 6PR	TT	163	663	96	A6	710	52	2.022	303

KNK50

KNK52



- High load bearing capacity with low section off-road and agricultural tyre
- Holding features for dry and wet grounds thanks to its pattern

Inflated Unloaded Dimensions

Load & Pressure

Product Code	Tyre Size / Ply Rating	TT/TL	Section Width	Overall Diameter	Load Index	Speed Index	Tyre Load Capacity	Tyre Pressure At Max. Load	Dynamic Rolling Circumference	Static Loaded Radiu
			(mm)	(mm)			(Kg)	(Psi)	(mm)	(mm)
1501	4.50-10 4PR	TT	124	490	49	A6	185	30	1.495	221
1611	5.00-12 4PR	TT	145	580	62	A6	265	32	1.769	262
1732	7.00-12 6PR	TT	200	683	83	A6	487	36	2.083	304
1752	6.50/80-13 6PR	TT	170	640	82	A6	475	52	1.952	289

KNK52

IMPLEMENT
TYRES

KNK54



- High traction ability thanks to its angle blocks
- Has easy movement ability thanks to anti-ground base design
- Preventing clusters in the center and sidewalls during movement of tractor thanks to its open design in center preventing clusters in the center and sidewalls during movement
- Facilitate releasing of muds thanks to windowed blocks

	Inflated Unloaded Dimensions						Load & Pressure				
	Product Code	Tyre Size / Ply Rating	TT/TL	Section Width	Overall Diameter	Load Index	Speed Index	Tyre Load Capacity	Tyre Pressure At Max. Load	Dynamic Rolling Circumference	Static Loaded Radius
				(mm)	(mm)			(Kg)	(Psi)	(mm)	(mm)
KNK54	1702	6.50/80-12 6PR	TT	163	588	80	A6	450	52	1.793	266

KNK140



- Proper use in lands and gardens
- Strong and robust structure
- Preventing skidding thanks to its special pattern
- Long lasting and economic use
- Optimum performance with small-type gardening and agriculture vehicles

	Inflated Unloaded Dimensions						Load & Pressure				
	Product Code	Tyre Size / Ply Rating	TT/TL	Section Width	Overall Diameter	Load Index	Speed Index	Tyre Load Capacity	Tyre Pressure At Max. Load	Dynamic Rolling Circumference	Static Loaded Radius
				(mm)	(mm)			(Kg)	(Psi)	(mm)	(mm)
KNK140	1802	5.00-15 6PR	TT	145	655	76	A6	400	50	1.998	300

IMPLEMENT TYRES

KNK48



- High tread depth
- Low Rolling resistance
- High comfort
- Low soil compact feature thanks to its wide base

Inflated Unloaded Dimensions

Load & Pressure

Product Code	Tyre Size / Ply Rating	TT/TL	Inflated Unloaded Dimensions		Load Index	Speed Index	Load & Pressure			
			Section Width	Overall Diameter			Tyre Load Capacity	Tyre Pressure At Max. Load	Dynamic Rolling Circumference	Static Loaded Radiu
			(mm)	(mm)						
1764	10.0/80-12 10PR	TL	264	710	116	A8	1250	57	2.166	314

KNK48

KNK42



- Low Rolling resistance
- High comfort
- Prevent skidding thanks to its special pattern
- Low soil compact feature thanks to its wide base

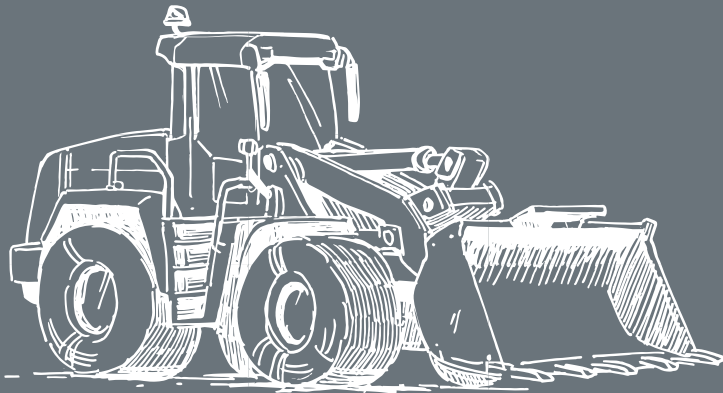
Inflated Unloaded Dimensions

Load & Pressure

Product Code	Tyre Size / Ply Rating	TT/TL	Inflated Unloaded Dimensions		Load Index	Speed Index	Load & Pressure			
			Section Width	Overall Diameter			Tyre Load Capacity	Tyre Pressure At Max. Load	Dynamic Rolling Circumference	Static Loaded Radiu
			(mm)	(mm)						
1774	10.0/80-12 10PR	TL	261	671	117	A8	1285	57	2.047	299

KNK42

INDUSTRIAL, EM, OTR TYRES



OR71 KNK44 KNK65 KNK66

IND80 IND85 IND88

KNK70 KNK72 KNK74

KNK77 KNK88 KNK40

ÖZKA





**RADIAL EM
TYRES**

OR71

- High traction and comfort
- Longer service life
- Comfortable drive due to flexible sidewall structure
- Strong carcass structure
- Resistance to fatigue due to wide shoulder and blocks
- Strong tread compound for cut-resistance
- High performance due to wide base track
- Mud repellent feature due to specially designed tread pattern

Inflated Unloaded Dimensions

Load & Pressure

Product Code	Tyre Size / Ply Rating	TT/TL	Section Width	Overall Diameter	Load Index	Speed Index	Tyre Load Capacity	Tyre Pressure At Max. Load	Dynamic Rolling Circumference	Static Loaded Radius	
			(mm)	(mm)			(Kg)	(Psi)	(mm)	(mm)	
OR71	R702446071	460/70 R24	TL	455	1.255	159/159	A8/B	4375/4375	58	3.780	580
	R8024440	440/80 R24	TL	450	1.320	154/154	A8/B	3750/3750	46	3.980	595
	R8028440	440/80 R28	TL	450	1.420	156/156	A8/B	4000/4000	46	4.260	645



**EM / INDUSTRIAL
TYRES**

KNK44

- Resistant against stone cuts, cracks and breaks
- Long wear-life

Inflated Unloaded Dimensions

Load & Pressure

Product Code	Tyre Size / Ply Rating	TT/TL	Section Width	Overall Diameter	Load Index	Speed Index	Tyre Load Capacity	Tyre Pressure At Max. Load	Dynamic Rolling Circumference	Static Loaded Radius	
			(mm)	(mm)			(Kg)	(Psi)	(mm)	(mm)	
KNK44	6247	10.00-20 16PR	TT	283	1.084	146/143	A8	3000	130	3.306	484
	6257	10.00-20 16PR	TL	283	1.084	146/143	A8	3000	130	3.306	484

EM / INDUSTRIAL TYRES

KNK65



- Long wear-life
- Cracking / fatigue resistance at treads
- Maximum traction
- Increased sidewall protection

Inflated Unloaded Dimensions

Load & Pressure

Product Code	Tyre Size / Ply Rating	TT/TL	Section Width	Overall Diameter	Load Index	Speed Index	Tyre Load Capacity	Tyre Pressure At Max. Load	Dynamic Rolling Circumference	Static Loaded Radiu
			(mm)	(mm)			(Kg)	(Psi)	(mm)	(mm)
6015	10-16.5 12PR	TL	282	775	138	A3	2360	84	2.364	352
6036	12-16.5 14PR	TL	320	846	148	A3	3150	90	2.580	380

KNK65

INDUSTRIAL, EM, OTR TYRES

KNK66



NEW PRODUCT

- High traction and comfort
- Designed compatible with scrap operations and recycling process
- Excellent maneuverability at high tonnage due to reinforced shoulder blocks.
- Comfortable drive due to flexible sidewall structure
- Reinforced back structure
- Longer life due to improved back structure
- Wear resistance any type of lands due to special back combination

Inflated Unloaded Dimensions

Load & Pressure

Product Code	Tyre Size / Ply Rating	TT/TL	Section Width	Overall Diameter	Load Index	Speed Index	Tyre Load Capacity	Tyre Pressure At Max. Load	Dynamic Rolling Circumference	Static Loaded Radiu
			(mm)	(mm)			(Kg)	(Psi)	(mm)	(mm)
6046	12-16.5 14PR	TL	320	846	148	A3	3150	90	2.580	380

KNK66



- High traction and excellent self-cleaning feature in any conditions thanks to deep and corrugated tread structure
- Resistance against stone cuts, cracks and breaks
- Higher wear and root resistance thanks to using bar in the center
- Resistance to any kind of impacts
- Long wear-life

Inflated Unloaded Dimensions

Load & Pressure

Product Code	Tyre Size / Ply Rating	TT/TL	Inflated Unloaded Dimensions		Load Index	Speed Index	Load & Pressure			
			Section Width (mm)	Overall Diameter (mm)			Tyre Load Capacity (Kg)	Tyre Pressure At Max. Load (Psi)	Dynamic Rolling Circumference (mm)	Static Loaded Radius (mm)
6055	10-16.5 12PR	TL	256	793	138	A3	2360	84	2.419	359
6076	12-16.5 14PR	TL	297	858	144	A3	2800	83	2.617	385
6115	10.5/80-18 12PR	TL	271	892	135	A8	2180	62	2.721	403
6156	12.5/80-18 14PR	TL	285	955	146	A8	3000	62	2.913	428
6196	14.5-20 14PR	TL	355	1.095	143	D	2725	51	3.340	489
6277	16.0/70-20 16PR	TL	385	1.091	166	A2	5300	65	3.328	487
6277M	405/70-20 16PR	TL	385	1.091	166	A2	5300	65	3.328	487
6287	15.5/80-24 16PR	TL	412	1.269	162	A8	4750	72	3.870	569
6377	16.0/70-24 16PR	TL	418	1.200	169	A2	5800	65	3.660	541
6377M	405/70-24 16PR	TL	418	1.200	169	A2	5800	65	3.660	541
6397	16.9-24 16PR	TL	429	1.310	154	A8	3750	46	3.996	585
6397M	440/80-24 16PR	TL	429	1.310	154	A8	3750	46	3.996	585
6566	17.5L-24 14PR	TL	475	1.277	154	A8	3750	46	3.895	572
6816	15.5-25 14PR	TL	400	1.325	173	A2	6500	68	4.041	594
6516	18.4-26 14PR	TL	467	1.425	160	A8	4500	42	4.346	636
6616	16.9-28 14PR	TL	429	1.410	156	A8	4000	43	4.301	635
6616M	440/80-28 14PR	TL	429	1.410	156	A8	4000	43	4.301	635
6957	16.9-30 16PR	TL	418	1.466	156	A8	4000	47	4.471	663

IND80

EM / INDUSTRIAL TYRES

IND85

NEW PRODUCT



- High traction and comfort
- Resistance to any kind of impacts back structure
- Comfortable drive due to flexible sidewall structure
- Reinforced bead design
- Reinforced sidewall structure
- Excellent maneuverability at high tonnage due to flexible sidewall structure
- Longer life with its reinforced tread pattern
- Strong tread compound against punctures and impacts
- Longer life due to increased tread number and improved tread depth

Inflated Unloaded Dimensions

Load & Pressure

IND85	Product Code	Tyre Size / Ply Rating	TT/TL	Section Width	Overall Diameter	Load Index	Speed Index	Tyre Load Capacity	Tyre Pressure At Max. Load	Dynamic Rolling Circumference	Static Loaded Radiu
				(mm)	(mm)			(Kg)	(Psi)	(mm)	(mm)
	6136	12.5/80-18 14PR	TL	304	965	146	A8	3000	62	2.943	432



IND88

- Robust industrial pattern with higher resistance to puncture and tread wear
- Higher traction with wide pattern design at the center lug
- Reinforced bead design

Inflated Unloaded Dimensions

Load & Pressure

IND88	Product Code	Tyre Size / Ply Rating	TT/TL	Section Width	Overall Diameter	Load Index	Speed Index	Tyre Load Capacity	Tyre Pressure At Max. Load	Dynamic Rolling Circumference	Static Loaded Radiu
				(mm)	(mm)			(Kg)	(Psi)	(mm)	(mm)
	6166	12.5/80-18 14PR	TL	308	987	146	A8	3000	62	3.010	441
6176	340/80-18 14PR	TL	343	1.001	146	A8	3000	62	3.053	446	

OFF THE ROAD TYRES

KNK70



- Strong and durable thanks to excellent design
- Its compound resistant to wear, and its blocks resistant to heavy conditions with long maintenance periods
- Minimizing stretching at base with its strong blocks in its center

Inflated Unloaded Dimensions

Load & Pressure

Product Code	Tyre Size / Ply Rating	TT/TL	Section Width	Overall Diameter	Load Index	Speed Index	Tyre Load Capacity	Tyre Pressure At Max. Load	Dynamic Rolling Circumference	Static Loaded Radius	
			(mm)	(mm)			(Kg)	(Psi)	(mm)	(mm)	
KNK70	6761	14.00-24 24PR	TL	375	1.360	186	A2	9500	123	4.148	605
	6765	14.00-24 32PR	TL	375	1.360	190	A2	10600	145	4.148	605
	6419	17.5-25 20PR	TL	455	1.371	181	A2	8250	83	4.182	612
	6431	20.5-25 24PR	TL	531	1.527	189	A2	10300	76	4.657	674
	6451	23.5-25 24PR	TL	604	1.625	196	A2	12500	68	4.956	714
	6473	26.5-25 28PR	TL	702	1.785	203	A2	15500	68	5.444	778
	6475	26.5-25 32PR	TL	702	1.785	206	A2	17000	79	5.444	778
	6495	29.5-25 32PR	TL	758	1.923	210	A2	19000	72	5.865	833

KNK72



- High traction and excellent self-cleaning feature in any conditions thanks to deep and corrugated tread structure
- Resistant against stone cuts, cracks and breaks
- Higher wear and root resistance thanks to using bar in the center
- Resistance to any kind of impacts
- Long wear-life

Inflated Unloaded Dimensions

Load & Pressure

Product Code	Tyre Size / Ply Rating	TT/TL	Section Width	Overall Diameter	Load Index	Speed Index	Tyre Load Capacity	Tyre Pressure At Max. Load	Dynamic Rolling Circumference	Static Loaded Radius	
			(mm)	(mm)			(Kg)	(Psi)	(mm)	(mm)	
KNK72	6337	13.00-24 16PR	TL	335	1.280	151	A8	3450	58	3.904	573
	6357	14.00-24 16PR	TL	382	1.354	153	A8	3650	54	4.130	603

OFF THE ROAD TYRES

KNK74



- Strong structure
- Increased tread depth and tread pattern providing optimum traction in muddy fields

Inflated Unloaded Dimensions

Load & Pressure

Product Code	Tyre Size / Ply Rating	TT/TL	Inflated Unloaded Dimensions		Load Index	Speed Index	Load & Pressure			
			Section Width	Overall Diameter			Tyre Load Capacity	Tyre Pressure At Max. Load	Dynamic Rolling Circumference	Static Loaded Radiu
			(mm)	(mm)						
6297	16.00-24 16PR	TL	432	1.493	160	A8	4000	47	4.554	658

KNK74

INDUSTRIAL, EM, OTR TYRES

COMPACTOR TYRES

KNK77



- Wide shoulder and base width, blocked design
- High traction ability
- Anti-wear future thanks to its pattern appropriate for agricultural, industrial and off-road use
- Consisting durable blocks
- Easy use in soft grounds
- Balanced driving and easy control thanks to wide shoulder and blocks

Inflated Unloaded Dimensions

Load & Pressure

Product Code	Tyre Size / Ply Rating	TT/TL	Inflated Unloaded Dimensions		Load Index	Speed Index	Load & Pressure			
			Section Width	Overall Diameter			Tyre Load Capacity	Tyre Pressure At Max. Load	Dynamic Rolling Circumference	Static Loaded Radiu
			(mm)	(mm)						
6536	23.1-26 14PR	TL	587	1.580	166	A8	5300	33	4.819	698

KNK77

**COMPACTOR
TYRES**

KNK88



- *Compressing ability for asphalt with its plane surfaced tread pattern*
- *Stable operation feature thanks to strong frame at sidewalls*

Inflated Unloaded Dimensions

Load & Pressure

Product Code	Tyre Size / Ply Rating	TT/TL	Section Width	Overall Diameter	Load Index	Speed Index	Tyre Load Capacity	Tyre Pressure At Max. Load	Dynamic Rolling Circumference	Static Loaded Radius
			(mm)	(mm)			(Kg)	(Psi)	(mm)	(mm)
6225	9.00-20 12PR	TT	256	1.002	157	A2	4125	94	3.056	452
6262	11.00-20 16PR	TT	290	1.040	168	A2	5600	107	3.172	467

KNK88

**FORKLIFT
TYRES**

KNK40



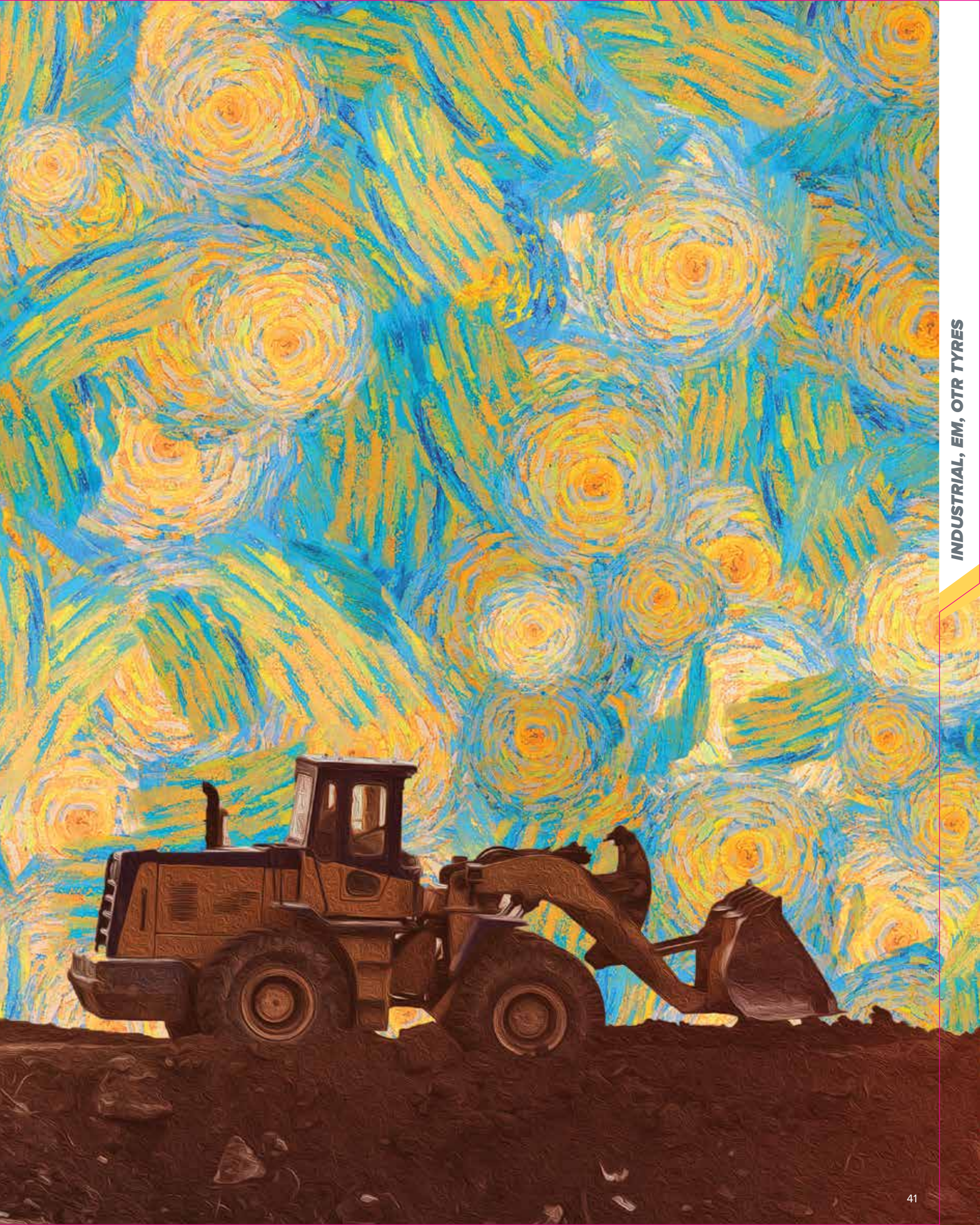
- *High kilometer performance thanks to its special structure*
- *Comfortable driving thanks to excellent traction*
- *Maximum traction*
- *Long wear-life*
- *Resistance to any kind of impacts*

Inflated Unloaded Dimensions

Load & Pressure

Product Code	Tyre Size / Ply Rating	TT/TL	Section Width	Overall Diameter	Load Index	Speed Index	Tyre Load Capacity	Tyre Pressure At Max. Load	Dynamic Rolling Circumference	Static Loaded Radius
			(mm)	(mm)			(Kg)	(Psi)	(mm)	(mm)
9105	6.00-9 12PR	TT	165	544	121	A5	1450	120	1.659	233
9205	6.50-10 12PR	TT	181	592	125	A5	1650	110	1.806	254
9306	7.00-12 14PR	TT	195	674	134	A5	2120	110	2.056	291
9406	8.15-15 (28*9-15) 14PR	TT	220	710	146	A5	3000	145	2.166	314
9418	8.25-15 18PR	TT	240	840	153	A5	3650	145	2.562	363

KNK40



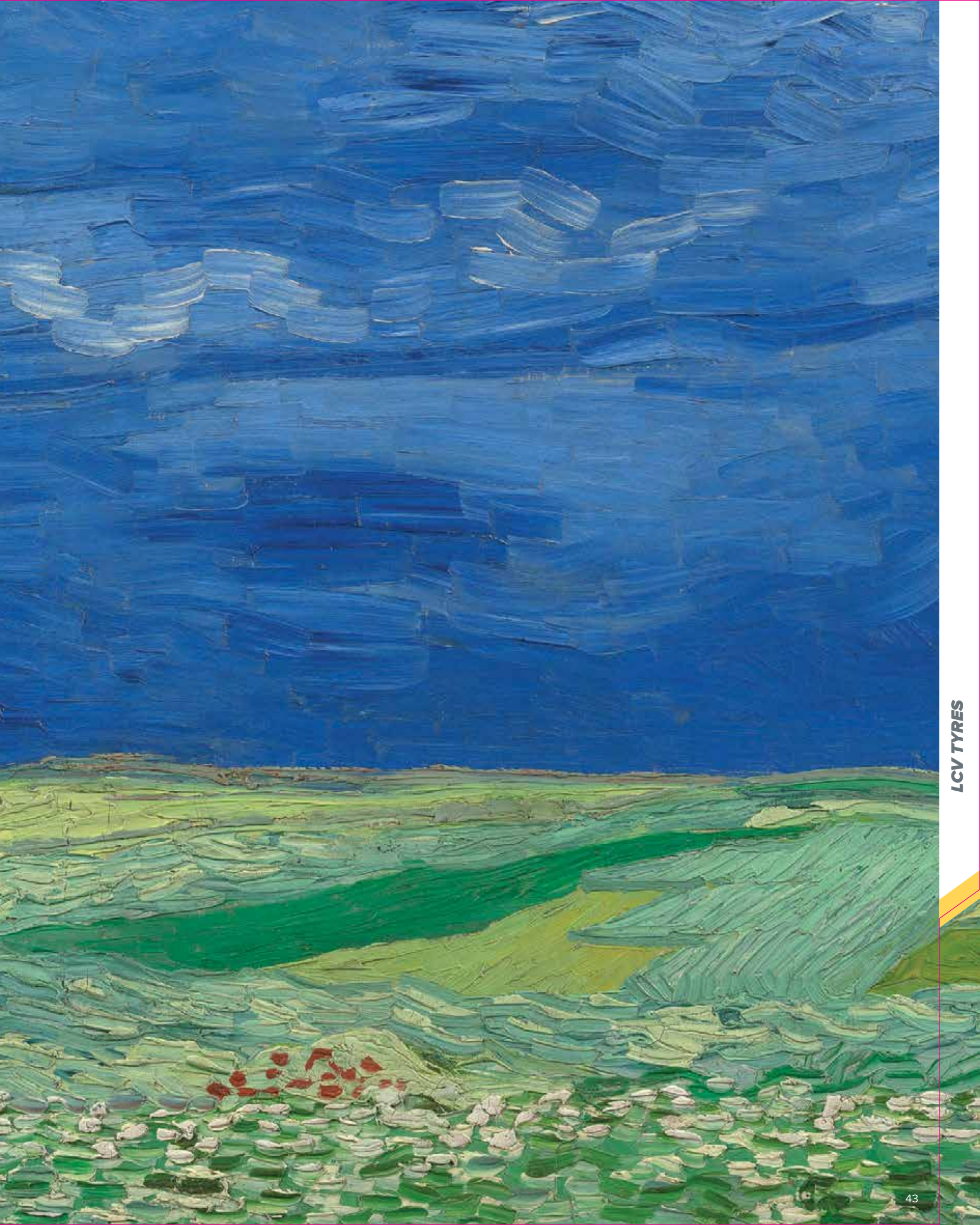
INDUSTRIAL, EM, OTR TYRES

LCV TYRES



KNK20 KNK24 KNK25 KNK126

ÖZKA



LIGHT TRUCK & MINIBUS TYRES

KNK20



- Strong frame structure and high wear resistance
- Balanced driving thanks to its corrugated pattern
- Increased water discharge thanks to its corrugated gutters
- Increased road bend ability and excellent traction
- Retreadability feature

Inflated Unloaded Dimensions

Load & Pressure

Product Code	Tyre Size / Ply Rating	TT/TL	Section Width	Overall Diameter	Load Index	Speed Index	Load Capacity Per Axle	Tyre Pressure At Max. Load	Dynamic Rolling Circumference	Static Loaded Radius	
			(mm)	(mm)			(Kg)	(Psi)	(mm)	(mm)	
KNK20	2144	7.50-15 10PR	TT	235	789	114/112	L	2360/4480	76	2.406	344
	2204	6.50-16 10PR	TT	176	748	108/107	L	2000/3900	73	2.281	331
	2304	7.00-16 10PR	TT	198	785	113/112	L	2300/4480	76	2.394	345
	2405	7.50-16 12PR	TT	210	810	121/120	L	2900/5600	94	2.471	355

KNK24



- Balanced driving and excellent traction thanks to its special corrugated pattern
- Increased water and mud resistance thanks to its surrounding gutters
- Strong frame structure and high wear resistance
- Comfortable driving
- Retreadability feature

Inflated Unloaded Dimensions

Load & Pressure

Product Code	Tyre Size / Ply Rating	TT/TL	Section Width	Overall Diameter	Load Index	Speed Index	Load Capacity Per Axle	Tyre Pressure At Max. Load	Dynamic Rolling Circumference	Static Loaded Radius	
			(mm)	(mm)			(Kg)	(Psi)	(mm)	(mm)	
KNK24	2415	7.50-16 12PR	TT	210	810	121/120	L	2900/5600	94	2.471	355

LIGHT TRUCK & MINIBUS TYRES

KNK25



- Optimum performance in traction and brakes due to special deep back pattern
- Strong frame structure and high wear resistance
- Anti-stone increased water and mud resistance thanks to its surrounding gutters
- Retreadability feature

Inflated Unloaded Dimensions

Load & Pressure

Product Code	Tyre Size / Ply Rating	TT/TL	Inflated Unloaded Dimensions		Load Index	Speed Index	Load & Pressure			
			Section Width	Overall Diameter			Load Capacity Per Axle	Tyre Pressure At Max. Load	Dynamic Rolling Circumference	Static Loaded Radius
			(mm)	(mm)			(Kg)	(Psi)	(mm)	(mm)
2425	7.50-16 12PR	TT	210	810	121/120	L	2900/5600	94	2.471	355

KNK25

KNK126



- Balanced driving and excellent traction thanks to its special corrugated pattern
- Increased water and mud resistance thanks to its surrounding gutters
- Strong frame structure and high wear resistance
- Comfortable driving
- Retreadability feature

Inflated Unloaded Dimensions

Load & Pressure

Product Code	Tyre Size / Ply Rating	TT/TL	Inflated Unloaded Dimensions		Load Index	Speed Index	Load & Pressure			
			Section Width	Overall Diameter			Load Capacity Per Axle	Tyre Pressure At Max. Load	Dynamic Rolling Circumference	Static Loaded Radius
			(mm)	(mm)			(Kg)	(Psi)	(mm)	(mm)
2154	7.50-15 10PR	TT	235	786	114/112	L	2360/4480	76	2.397	342
2214	6.50-16 10PR	TT	176	748	108/107	L	2000/3900	73	2.281	331
2314	7.00-16 10PR	TT	198	785	113/112	L	2300/4480	76	2.394	345
2435	7.50-16 12PR	TT	210	810	121/120	L	2900/5600	94	2.471	355

KNK126

LCV TYRES

MPT TYRES



KNK12

KNK10

KNK14

ÖZKA



**MILITARY
TYRES**

KNK12



- Pattern feature designed for non-road and highway use
- Excellent maneuverability due to nondirectional use feature

Inflated Unloaded Dimensions

Load & Pressure

Product Code	Tyre Size / Ply Rating	TT/TL	Inflated Unloaded Dimensions		Load Index	Speed Index	Load & Pressure			
			Section Width	Overall Diameter			Tyre Load Capacity	Tyre Pressure At Max. Load	Dynamic Rolling Circumference	Static Loaded Radii
			(mm)	(mm)			(Kg)	(Psi)	(mm)	(mm)
KNK12 7525	12.5-20 12PR	TT	325	1.040	132	F	2000	51	3.172	454

BUILT ON EXPERTISE

KNK10



- Wide base, designed for use at asphalt and off-road (land)
- Self-cleaning tread structure feature in asphalt use
- Suitable for any weather conditions, excellent traction
- High drift endurance due to diagonal tread structure

Inflated Unloaded Dimensions

Load & Pressure

Product Code	Tyre Size / Ply Rating	TT/TL	Inflated Unloaded Dimensions		Load Index	Speed Index	Load & Pressure				
			Section Width	Overall Diameter			Tyre Load Capacity	Tyre Pressure At Max. Load	Dynamic Rolling Circumference	Static Loaded Radii	
			(mm)	(mm)			(Kg)	(Psi)	(mm)	(mm)	
KNK10	7748	14.00-20 18PR	TT	375	1.260	160/157	F	4500	100	3.843	536
	7749	14.00-20 20PR	TT	375	1.260	161/158	F	4625	108	3.843	536



- *Military tyre for both off the road and highway application*
- *More resistance with multilayer carcass body across puncture*
- *Self-cleaning lug design*

Inflated Unloaded Dimensions

Load & Pressure

Product Code	Tyre Size / Ply Rating	TT/TL	Inflated Unloaded Dimensions		Load Index	Speed Index	Load & Pressure			Static Loaded Radius
			Section Width	Overall Diameter			Tyre Load Capacity	Tyre Pressure At Max. Load	Dynamic Rolling Circumference	
			(mm)	(mm)			(Kg)	(Psi)	(mm)	
7423	13.00-18 8PR	TT	354	1.125	131	F	1950	43	3.431	479

KNK14

BUILT ON EXPERTISE




ÖZKA TYRES
Agricultural and Industrial Tyres

HEADQUARTER / FACTORY

Mahmutpaşa Mah. Kanalyolu Cad. No:129 41140
Başiskele / Kocaeli TURKEY
Tel: +90 262 349 50 00
info@ozkalastik.com

SALES OFFICE / WAREHOUSE

Karadenizliler Mah. Kullar Başyığıt Cad. No:101
Başiskele / Kocaeli TURKEY
Tel: +90 262 349 41 11
info@ozkalastik.com

 ozkalastik  ozkalastik  ozkalastik

www.ozkalastik.com